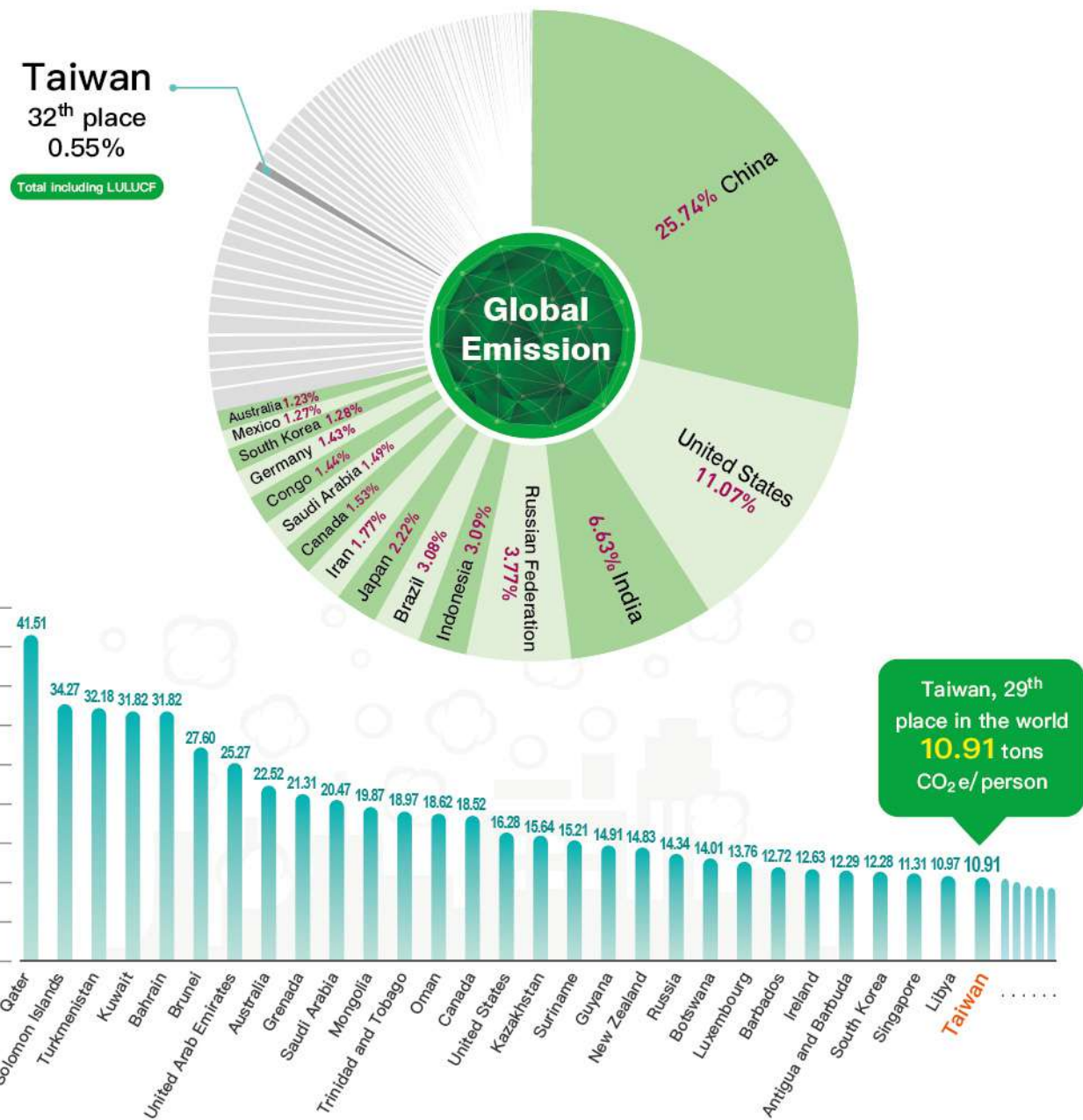


# Global Share of Taiwan's Greenhouse Gases Emission

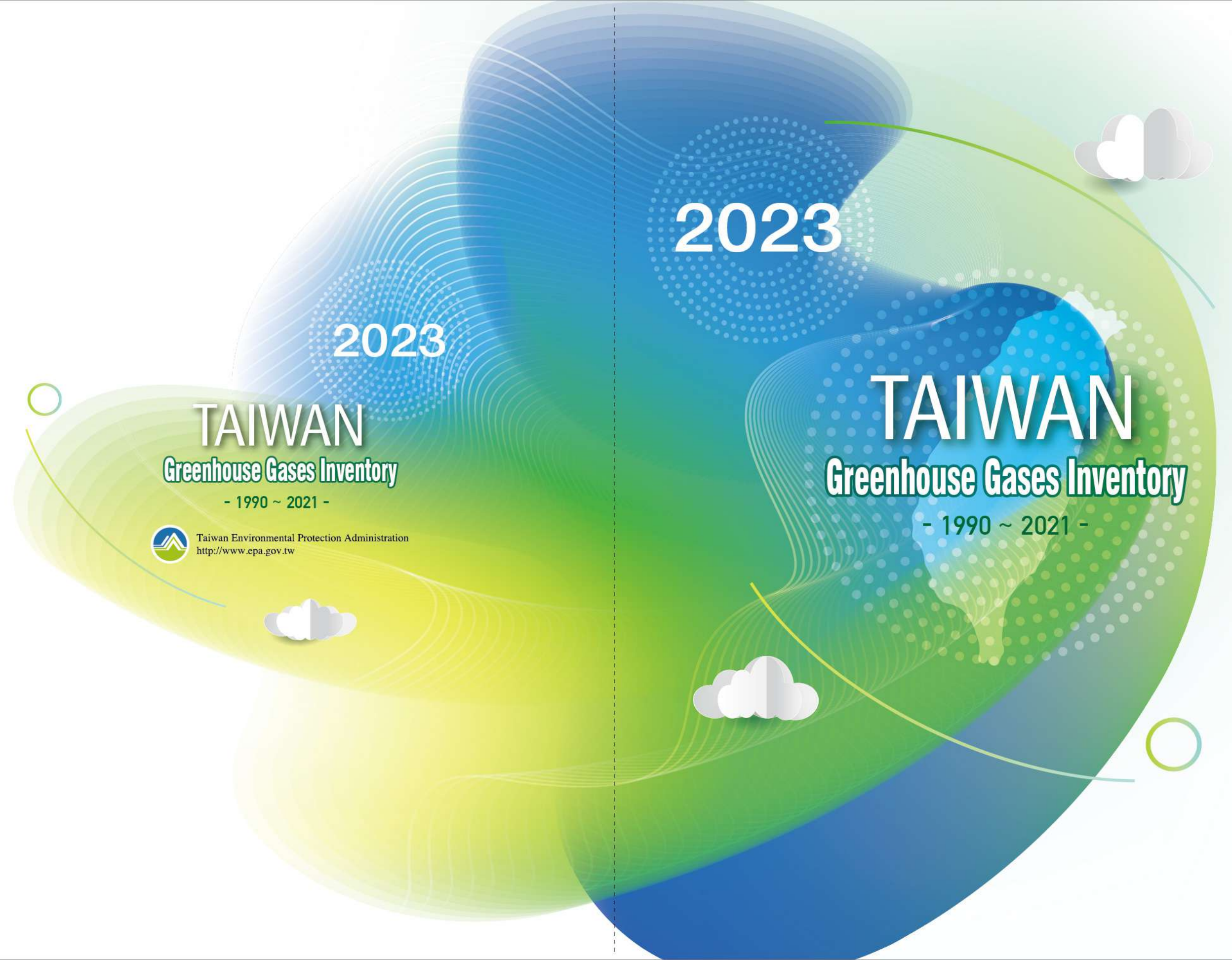
Taiwan belongs to the island-type independent energy system. More than 98% of energy is imported. The economy is guided by export trade.

The industrial structure is mainly manufacturing, in which semiconductor industry output value accounts for 26.2% of the world, ranking the second in the world. The annual growth rate of output value reaches 26.8%, which is better than that of the world(26.2%) in 2021.

But Taiwan's greenhouse gases emission only makes up 0.55% of the global amount. The major industries are continuing to reduce greenhouse gases emission in order to maintain their international competitiveness. However, as it subscribes to the non-nuclear homeland policy, Taiwan is facing greater difficulty as it endeavors to further reduce emissions.



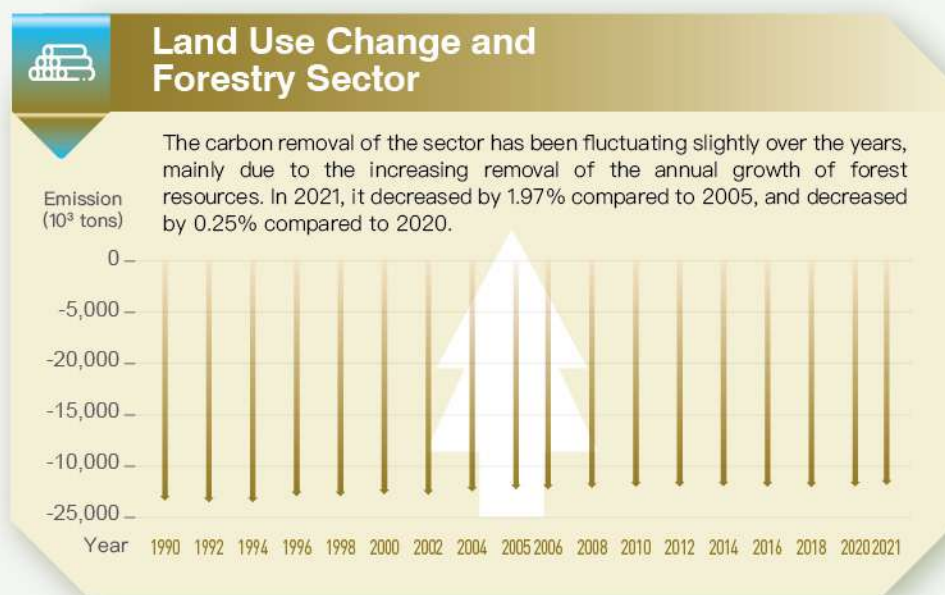
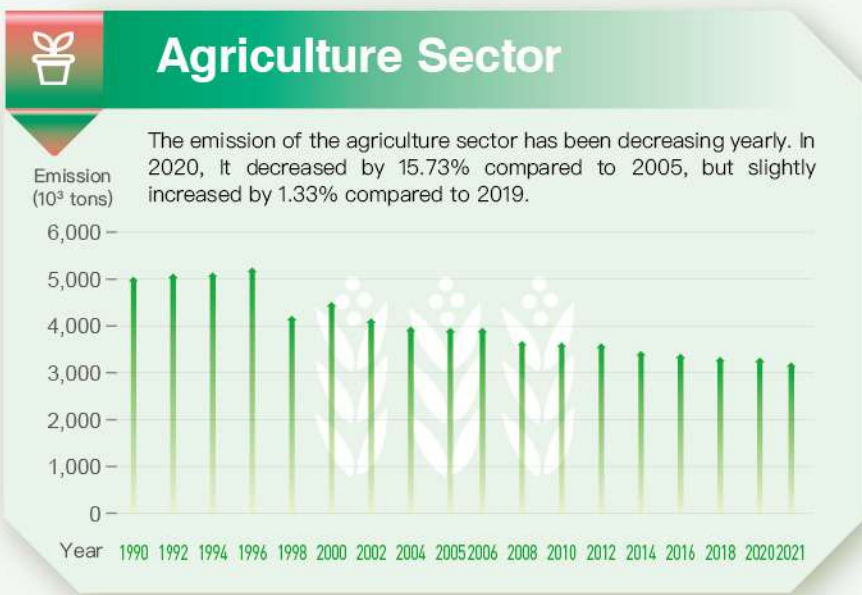
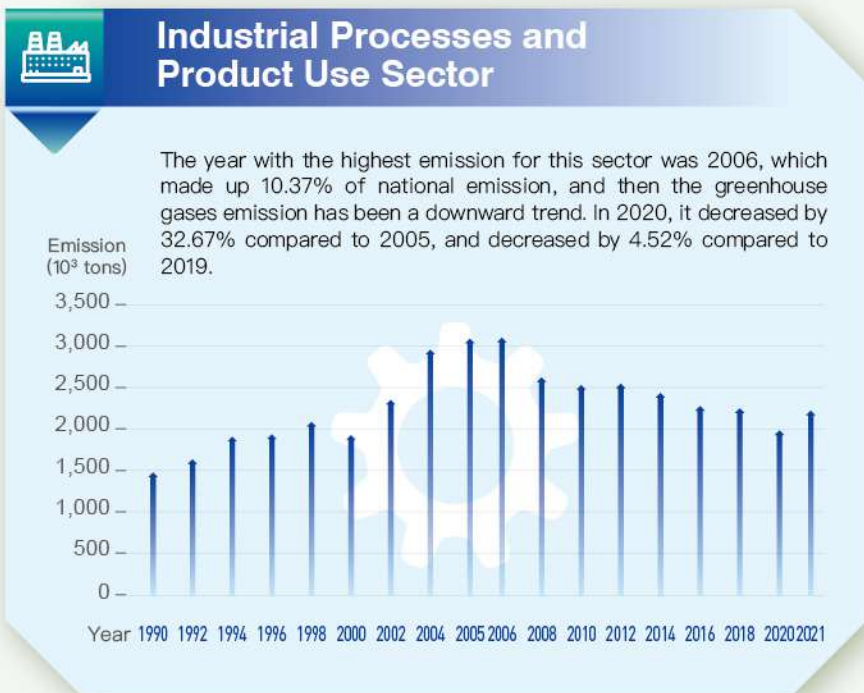
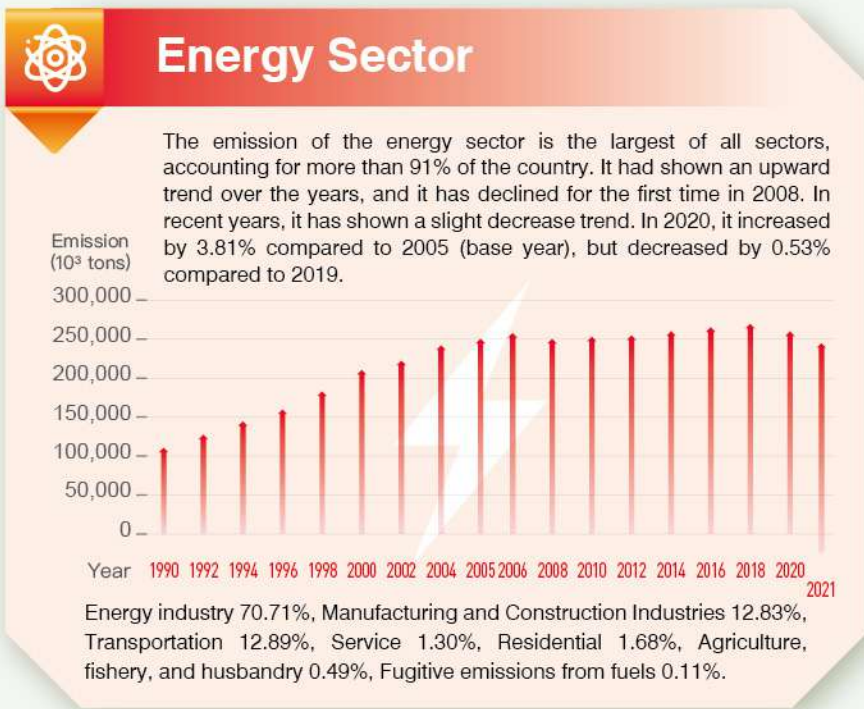
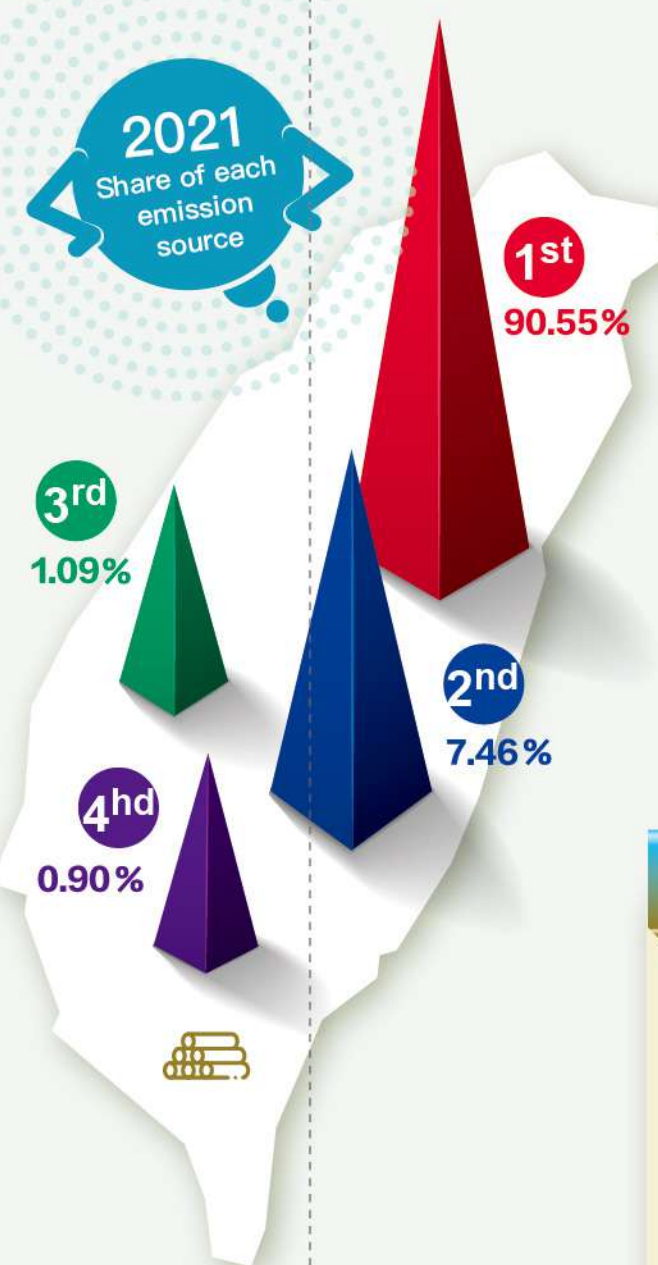
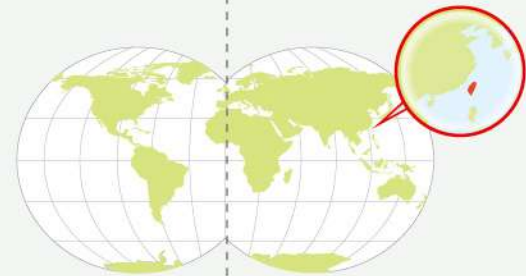
Note: Calculated based on total GHG emissions (excluding LULUCF)  
Ref.: World Resources Institute (WRI) Climate Watch





# Trends of Various Emission Sources

The emission sources in Taiwan come from five major sectors: energy, industrial processes and product use, agriculture, land use change and forestry and waste.



## Emission Trends of Greenhouse Gases

### 2021 Emission share of each greenhouse gas

